



Conagra Brands, Inc.
Six ConAgra Drive
Omaha, NE 68102

Technical Data Sheet

| | | | |
|---------------|--|---------------|--|
| Product Name: | Swiss Miss Hot Cocoa Mix Milk Chocolate Flavour | Product Code: | 1570005209 (1570005210) & 1570005210200 |
| Issue Date: | August 21, 2025 | Net Weight: | 60-28g Envelopes; Net WT 1.68kg |
| Replace Date: | February 21, 2026 | Brand: | Swiss Miss |

Product Description – Hot Cocoa Mix, Milk Chocolate Flavour

Nutritional Information

| Nutrient | Per Serving 28g |
|------------------|------------------|
| Energy (kcal) | 500 kJ (119 Cal) |
| Protein, g | 1.2 |
| Total Fat, g | 2.1 |
| Saturated Fat, g | 1.9 |
| Carbohydrates, g | 23.3 |
| Sugars, g | 16.4 |
| Sodium, mg | 151 |

Nutrition on Label

| NUTRITION INFORMATION | | |
|--|------------------------------|-----------------------------|
| When prepared with water | | |
| Servings per package: 60 | | |
| Servings size: 1 envelope (approx. 28 g + 180mL Water) | | |
| | Average Quantity per Serving | Average Quantity per 100 mL |
| Energy | 500 kJ (119 Cal) | 277 kJ (66 Cal) |
| Protein | 1.2 g | 0.7 g |
| Fat, Total | 2.1 g | 1.2 g |
| - saturated | 1.9 g | 1.0 g |
| Carbohydrate | 23.3 g | 12.9 g |
| - sugars | 16.4 g | 9.1 g |
| Sodium | 151 mg | 84 mg |

Nutritional Facts Panel Derived From: Software (Oracle)
Applicable Rounding Rules Applied To Label Declarations



Conagra Brands, Inc.
Six ConAgra Drive
Omaha, NE 68102

Technical Data Sheet

| | | | |
|---------------|--|---------------|--|
| Product Name: | Swiss Miss Hot Cocoa Mix Milk Chocolate Flavour | Product Code: | 1570005209 (1570005210) & 1570005210200 |
| Issue Date: | August 21, 2025 | Net Weight: | 60-28g Envelopes; Net WT 1.68kg |
| Replace Date: | February 21, 2026 | Brand: | Swiss Miss |

Ingredient Ranges (%)

| Ingredients* | % |
|---|--------|
| Sugar | 50-60% |
| Glucose Syrup | 10-20% |
| Modified Whey | 10-20% |
| Cocoa Solids (Minimum 6%) (processed with Alkali) | 6% |
| Hydrogenated Coconut Oil | 5-10% |
| Skimmed Milk Powder (Minimum 2%) | 2-5% |
| Salt | <2% |
| Acidity Regulator (340ii) | <2% |
| Emulsifier (471) | <2% |
| Artificial Flavour (vanilla flavour) | <2% |
| Total | 100% |

Contains: Milk

***Ingredients are listed in sequence according to content percentage from high to low**

Ingredient Statement

INGREDIENTS: SUGAR, GLUCOSE SYRUP, MODIFIED WHEY, COCOA SOLIDS (MINIMUM 6%), HYDROGENATED COCONUT OIL, SKIMMED MILK POWDER (MINIMUM 2%), SALT, ACIDITY REGULATOR (340ii), EMULSIFIER (471), ARTIFICIAL FLAVOUR (VANILLA FLAVOUR).



Conagra Brands, Inc.
Six ConAgra Drive
Omaha, NE 68102

Technical Data Sheet

| | | | |
|----------------------|--|----------------------|--|
| Product Name: | Swiss Miss Hot Cocoa Mix Milk Chocolate Flavour | Product Code: | 1570005209 (1570005210) & 1570005210200 |
| Issue Date: | August 21, 2025 | Net Weight: | 60-28g Envelopes; Net WT 1.68kg |
| Replace Date: | February 21, 2026 | Brand: | Swiss Miss |

Country of Origin

This product is produced and manufactured at a facility in the United States of America. The manufacturing site for this product is:

Conagra Brands, Inc.
104 River Road
Menomonie, Wisconsin 54751

This facility is under the jurisdiction of the U.S. Food and Drug Administration (FDA) or the U.S. Department of Agriculture (USDA), and is in full compliance with requirements for Good Manufacturing Practices (GMP), Hazard Analysis and Critical Control Points (HACCP) and other pertinent food laws and regulations.

All correspondence regarding this product should be directed to the address below.

Conagra Brands
Chicago, IL 60654

Chemical & Physical Characteristics

| | |
|--------------------|---------------|
| Density, grams/cc: | 0.539 Minimum |
| Color: | Typical |
| Appearance: | Typical |
| Flavor: | Typical |
| Texture: | Typical |

Microbiological Standards

| | |
|----------------------|-----------------|
| Aerobic Plate Count: | < 10,000 CFU/g |
| Coliforms: | < 10 CFU/g |
| <i>Salmonella</i> : | Negative / 375g |

This product is shelf-stable under normal storage conditions. This product is produced under a Food Safety Plan that is compliant with FSMA requirements. The Food Safety Plan programs are designed to manage microbiological risks and include supportive Prerequisite Programs, Operational Prerequisite Programs, and validated CCPs. Good manufacturing/hygienic practices (GMPs and GHPs), hygienic zoning principles, supply chain controls, sanitation controls, and a robust environmental monitoring program are strictly adhered to during manufacturing. Therefore, the above microbiological parameters can be expected.

Storage

Store in a cool dry place.

Shelf Life

720 days from date of manufacture.



Conagra Brands, Inc.
Six ConAgra Drive
Omaha, NE 68102

Technical Data Sheet

| | | | |
|---------------|--|---------------|--|
| Product Name: | Swiss Miss Hot Cocoa Mix Milk Chocolate Flavour | Product Code: | 1570005209 (1570005210) & 1570005210200 |
| Issue Date: | August 21, 2025 | Net Weight: | 60-28g Envelopes; Net WT 1.68kg |
| Replace Date: | February 21, 2026 | Brand: | Swiss Miss |

Kosher/Halal Information

| |
|-----|
| N/A |
|-----|

Packaging

| |
|------------|
| Carton Box |
|------------|

Lot Code Interpretation



| Secondary Container (Shipping Case) | | | | | | |
|-------------------------------------|---------------------------|------------------|------------------|-----------------|--------------|-----------------|
| Line 1 | 6030110221 22:05 | | | | | |
| | 6030 | 1 | 102 | 2 | 1 | 22:05 |
| | Plant | Current year | Julian date code | Decade | Process line | Hour and minute |
| Line 2 | BEST If Used By APR242023 | | | | | |
| | BEST If Used By | APR | 24 | 2023 | | |
| | Print these words | Expiration month | Expiration day | Expiration year | | |

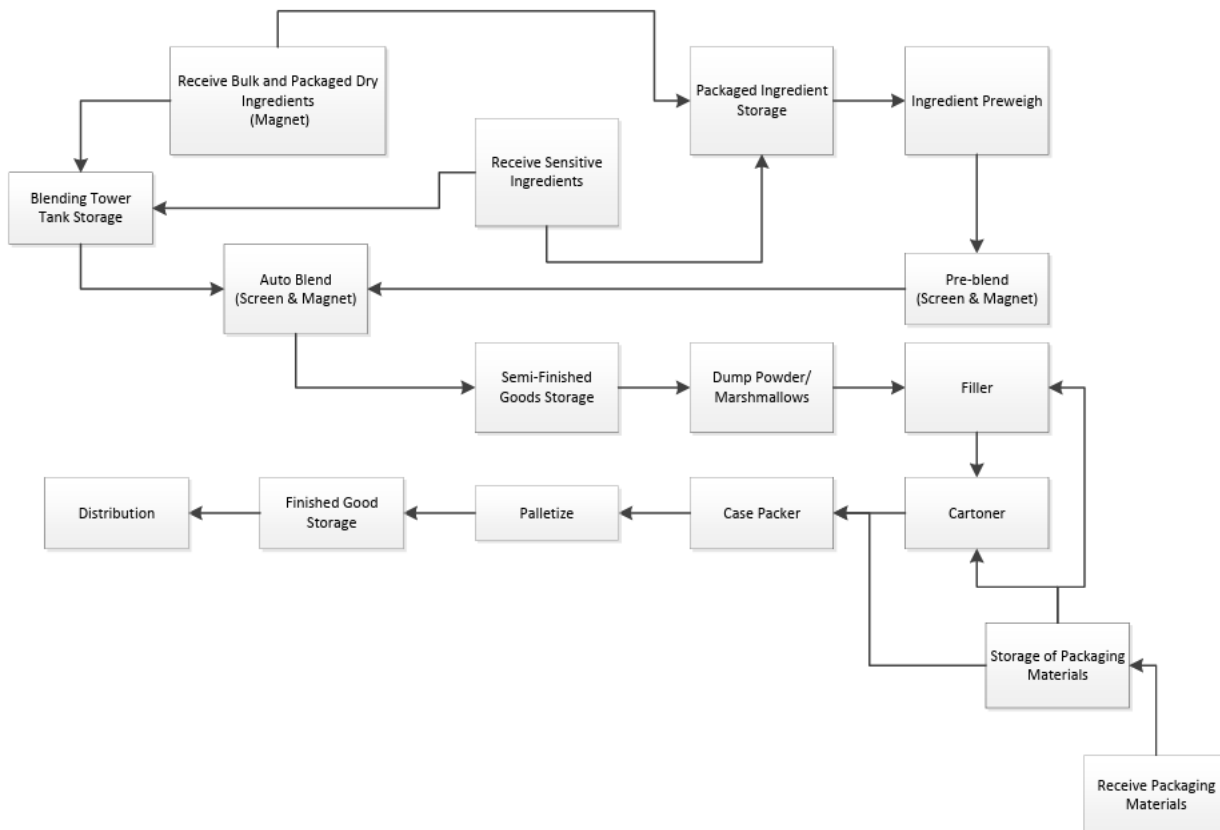


Conagra Brands, Inc.
Six ConAgra Drive
Omaha, NE 68102

Technical Data Sheet

| | | | |
|----------------------|--|----------------------|--|
| Product Name: | Swiss Miss Hot Cocoa Mix Milk Chocolate Flavour | Product Code: | 1570005209 (1570005210) & 1570005210200 |
| Issue Date: | August 21, 2025 | Net Weight: | 60-28g Envelopes; Net WT 1.68kg |
| Replace Date: | February 21, 2026 | Brand: | Swiss Miss |

Processing Flow Chart





Conagra Brands, Inc.
Six ConAgra Drive
Omaha, NE 68102

Technical Data Sheet

| | | | |
|----------------------|--|----------------------|--|
| Product Name: | Swiss Miss Hot Cocoa Mix Milk Chocolate Flavour | Product Code: | 1570005209 (1570005210) & 1570005210200 |
| Issue Date: | August 21, 2025 | Net Weight: | 60-28g Envelopes; Net WT 1.68kg |
| Replace Date: | February 21, 2026 | Brand: | Swiss Miss |

Pasteurization

- (1) Pasteurization time/temperatures for fluid milk can vary based on milk fat and solids content but are specific and mandated by the PMO (Pasteurized Milk Ordinance). Conagra Brands uses a typical milk pasteurization process for ingredients used in manufacturing Swiss Miss Hot Cocoa mix. This process includes the following pasteurization process:

Core Temperature: 161.3°Fahrenheit
Core Time: 15 Seconds

This is used on the liquid milk before drying into a powder.

- (2) Spray drying processes vary depending upon manufacturer. Milk based powder is warmed, condensed, then spray dried in conditions typically ranging from 150° Celsius to 260° Celsius air inlet temperature and 100° Celsius to 105° Celsius air outlet temperature exhausted from the drying chamber. Milk-based powder is then cooled to ambient conditions before being combined with remaining ingredients.

Raw milk (Source: Bovine)



Pasteurization process (1)



Add other ingredients



Spray drying process (2)



Spray dried milk-based powder



Add other ingredients
(Ambient conditions)



Ingredient Mixing



Sifting



Packaging

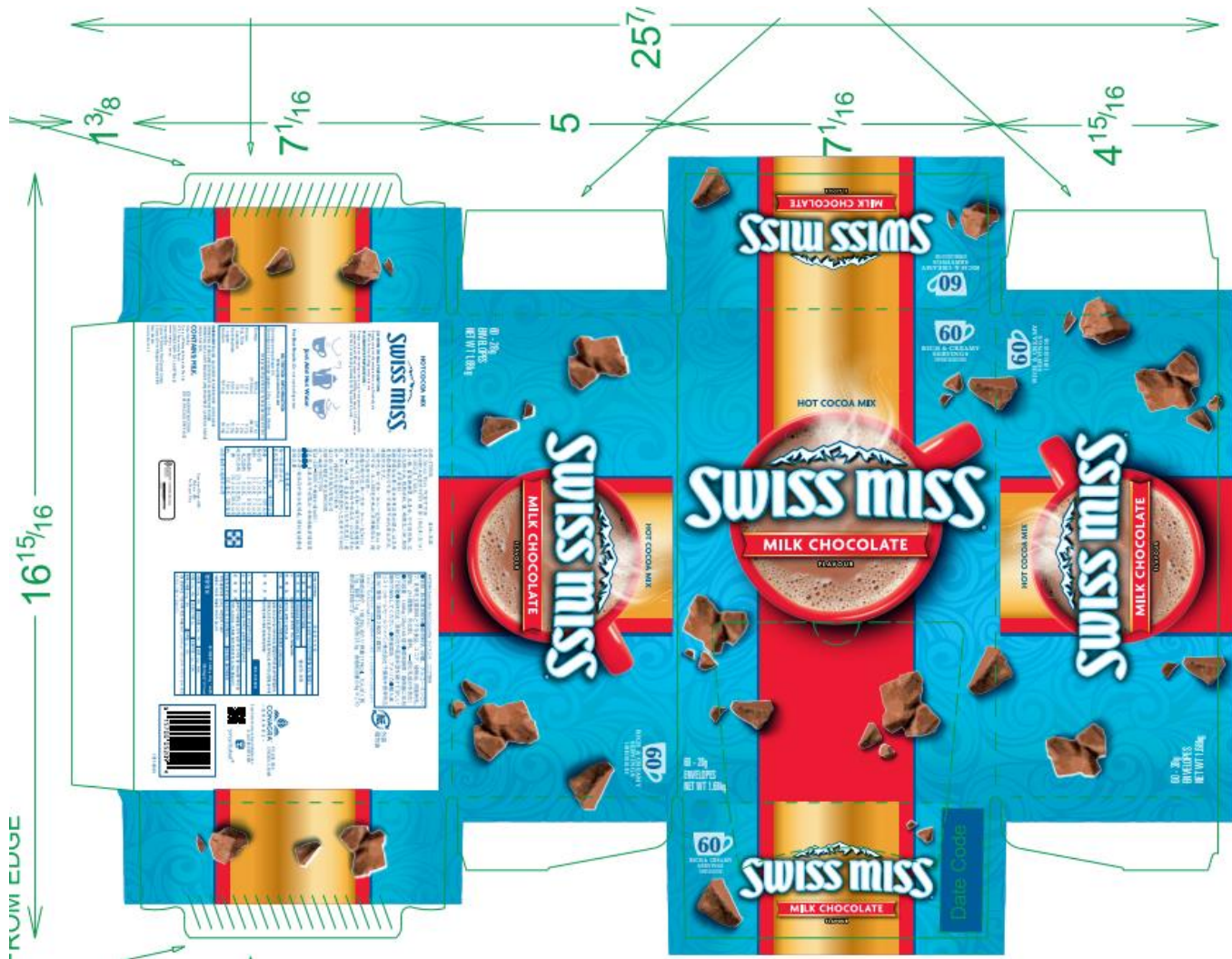


Casing & Palletizing

Technical Data Sheet

| | | | |
|---------------|--|---------------|--|
| Product Name: | Swiss Miss Hot Cocoa Mix Milk Chocolate Flavour | Product Code: | 1570005209 (1570005210) & 1570005210200 |
| Issue Date: | August 21, 2025 | Net Weight: | 60-28g Envelopes; Net WT 1.68kg |
| Replace Date: | February 21, 2026 | Brand: | Swiss Miss |

Label





Conagra Brands, Inc.
Six ConAgra Drive
Omaha, NE 68102

Technical Data Sheet

| | | | |
|----------------------|--|----------------------|--|
| Product Name: | Swiss Miss Hot Cocoa Mix Milk Chocolate Flavour | Product Code: | 1570005209 (1570005210) & 1570005210200 |
| Issue Date: | August 21, 2025 | Net Weight: | 60-28g Envelopes; Net WT 1.68kg |
| Replace Date: | February 21, 2026 | Brand: | Swiss Miss |

Note:

The information provided in this document is confidential and proprietary of Conagra Brands, Inc. Given the confidential and proprietary nature of the information, it cannot be reproduced or provided to any third parties, including in response to any request for such information contained therein pursuant to any request from any Governmental or Regulatory body without the prior written permission of Conagra Brands, Inc.

Jeanny De La Fe
Research & Development

If you have questions, please contact jeanny.delafe@conagra.com